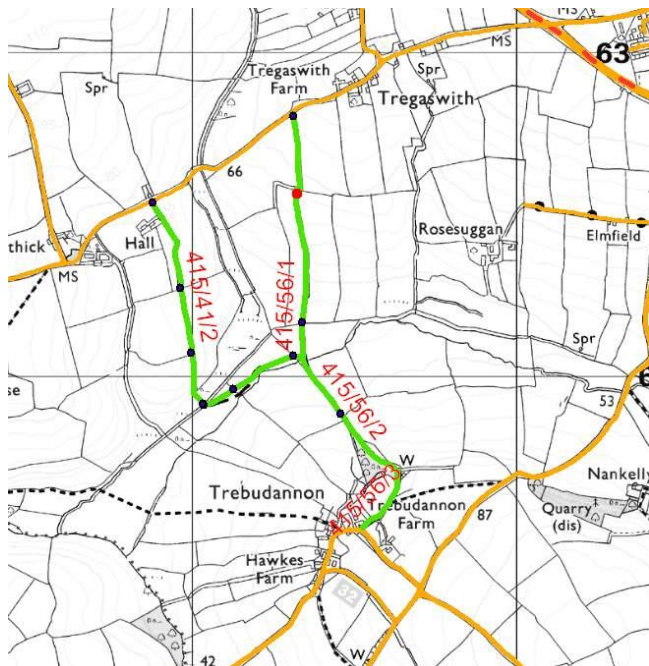


Map



We visited the bridleways on 19 June 2013 starting at the Northern end of 415/56/1. We walked down to the junction with 415/41 then took 415/41 to return northwards to the road. We did not survey the leg 415/56/2 down to Trebudannon Farm.

There have been many problems in the past on these bridleways.

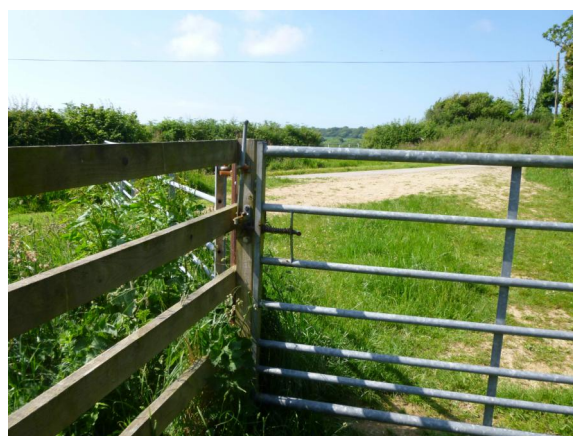
Recorded Gates (CC GIS) are marked with blue dot. A further unrecorded gate is marked with a red dot.

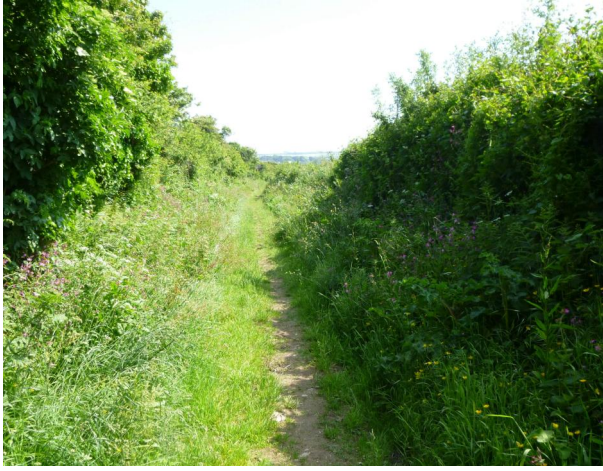
Walk through 415/56/1

The first gate is set back from the road and with a bridleway sign by the gate.

Gate ID: 415/107 **OS Grid Ref:** SW893628

The gate is extremely large but does swing easily. The handle/catch operates OK. But it is of a design that is impossible to use without having one hand on the gate to open it whilst the other is on the handle that is attached to the post. More or less impossible on horseback and very difficult if dismounted whilst holding your horse.





The bridleway then follows an old enclosed lane with a narrow worn path down the centre. However it is clear and usable.

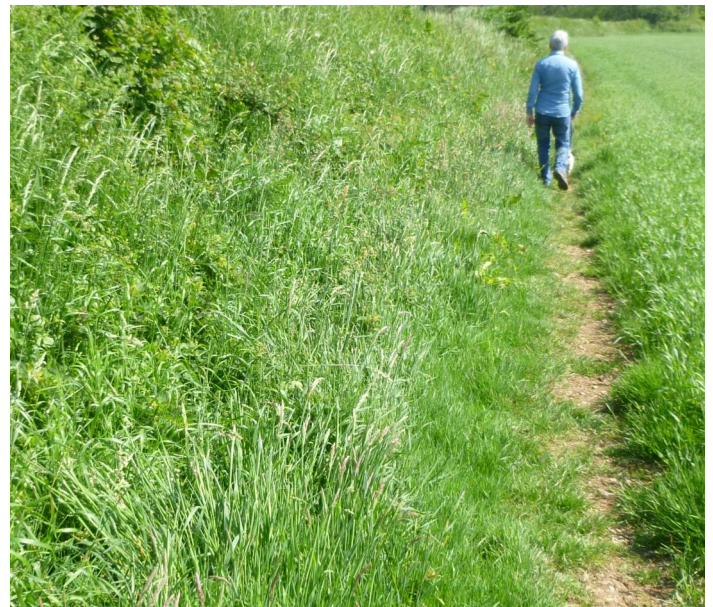
Then it zigzags to the right to a large double gate one side of which opens.

It has a horse handle and operates fine and well greased. Probably a little awkward from horse, but OK.

This gate is not recorded on CC GIS



The bridleway continues down the field margin



The field margin where the path should run is overgrown and uneven. The only usable path is alongside the crop.

There have been great problems on this section of the path in the past when crops are planted with the field margin being disturbed and never levelled. The field margin wants properly restoring as bridleway

There will again be issues when crops are planted and also if rabbit netting is put up.

Lower end of this section with gate (right) at bottom of the field. The gate is useable but very awkward - again requiring two hands because release handle is on post.

Gate ID: 415/106

OS Grid Ref: SW893622



After crossing this field (path not defined) you reach a ford and a pedestrian bridge to reach leg 415/56/2



Horses use the ford but pedestrians have to climb three foot up from eroded ground -only for the agile!

SUMMARY REPORT

- Overall the bridleway segment is usable. Gates are usable but difficult.
- There is no stock in the fields so all the gates are an unnecessary obstruction to use.
- In any case the first gate is not necessary for stock and should be removed.
- The field edge path is overgrown and uneven and unusable, users have to walk/ride along the edge of the path.
- Path broadly follows definitive line
- Pedestrian bridge onto the next segment is not usable without climbing and only for the agile.

Walk through 415/41/1

On reaching the end of 415/56/1 by the ford you turn right onto 415/41/1. The path across the grass field was unclear and there are no waymark signs to say the bridleway exists. You can see a field gate in the distance so we headed for this.

On reaching the gate we found it fitted with a bridleway handle with "hunting" type latch. It was OK to use.

Gate ID: 415/214 **OS Grid Ref: SW893621**



After going through the gate the line of the path was completely undefined. We followed the river best we could until we saw a gap in hedge in the distance..

- See pictures below.

On reaching the gap we found an open gate grown in, so it was impossible to assess its servcability



Gate ID: 415/215 **OS Grid Ref: SW891620**



On going through the gate we were faced with this hayfield with no discernable path.





We ploughed on knowing that the path should veer right to a bridge. More by luck than judgement we saw a “structure” to the right but barely visible because it was in a dip.

We made our way to this and we found a gated bridge.

Gate ID: 415/208 & 209 OS Grid Ref: SW890619



We consider this gated bridge to be an illegal obstruction as the bridleway gates and gap are only 4 foot wide at best, as is the bridge itself. HA S145 requires a 5 foot minimum width.

This structure is relatively new so it is puzzling how this has been authorised on a bridleway.

Notwithstanding the narrow width, the first gate does just about have room either side to manoeuvre a horse.

The unnecessary second gate is directly on the bridge itself and is unsafe for use by horse owing to the confined space.

Also the sides of the bridge (notwithstanding narrow width) have no protecting bottom kick board, making it unsafe especially with the confined space.

Below is picture looking back – how can a rider shut that gate behind him?



On grounds of safety these gates want to be removed immediately.

In any case two gates are not required.

Who authorised and installed this structure?

On going over the bridge there is a short section of field before a short steep section of path up through a small copse. You then come out into a field but the route of the bridleway is not at all clear. See RH pic.



We headed forward to see a gate gap in the distant hedge we headed for this. From the map and looking at the hedge it looked as if the BW should go through the hedge next to the field boundary – but was blocked and overgrown and with electric fence wire across.

Gate ID: 415/209

OS Grid Ref: SW890621



We then continued down the RH edge of the field and found a disused electric fence wire mostly hidden/buried all along the edge of the path.

Any horse could easily get entangled in this.

Please see more pictures of the electric fence wire on the next page.



Wire buried in the grass right next to the path!



Gate ID: 415/210

OS Grid Ref: SW890623



On reaching the end of this field another gate (open and we did not test it) lead to the last field before reaching a short farm lane to the road.

However the definitive route of the bridleway just inside the first gate (from the road) is blocked by a large heap of soil and rubbish, forcing users to go around to the right. Picture left below.

Picture right below shows final gate looking towards road with rope fastener.



Gate ID: 415/212

OS Grid Ref: SW889625



View from Road



SUMMARY REPORT

- Path is unsafe to use on horse because of potentially dangerous gated bridge obstruction and hidden wire alongside the bridleway
- Path is unsigned at junction with 415/56
- Bridleway is signed from the road once we cleared vegetation that was totally hiding it.
- Route is difficult to follow relies on guess work.
- Definitive line is obstructed on the northern half of this leg.

June 2013