

# HORSE AROUND

THE NEWSLETTER OF THE  
WEST PENWITH BRIDLEWAYS ASSOCIATION

AFFILIATED TO THE BRITISH HORSE SOCIETY



FREE TO MEMBERS

No. 18 AUTUMN 2006

## *Straight From the Horses Mouth*

Our apologies for not getting Horse Around out in August, hence another bumper issue, but even we need a break to spend a few afternoons on the beach. At last we managed to get out kayak surfing again.

We hope you enjoyed the fantastic summer we've had. I didn't see many out riding. Maybe it was due to the heat and flies or not being able to find a farrier! Along with many others we had a terrible job to arrange for a farrier. Hen's teeth springs to mind! I believe there were 6 not working during the summer school hols. We have only just got our horses shod and back into work. Both are 'tubby wobble buckets' after the September rains.

Over the summer, we have been very busy surveying the Ride-Uk route through Cornwall, "The Kernow Horse Trail". We have cycled, walked and driven the whole length checking it out and taking photos. It's looking pretty good. Adrian has prepared and submitted attractive project documents detailing the trail. So its over to Cornwall County Council to estimate costs and plan the way forward. We also have been up to the McAlpines site office to look at the plans for the new Goss Moor equestrian track and discuss with them the links on to the trail. The new equestrian and cyclist bridge is just being built.

Adrian has set up and launched a BHS Access Cornwall website and has relaunched our WPBA site. Due to a family bereavement and horse health problems, we finished the horse hike programme earlier than planned in the Spring, so if you are thinking it's a long time since you have been out riding with us, well that's true. Hopefully though we will all now get back into the habit with our new programme starting in October. If you are new to the horse hikes and want to know more, please give me a ring or the organiser of the ride.

One highlight of the summer was we had an 'End to Ender' stay with us. Judy Sharrock had set off from John 'O Groats in May and arrived in Cornwall in July. She and 'followers' stayed with us and I escorted her over the moors, collecting Dawn Jackson for a short part of the journey, then Beverley Jenkin rode out to meet us all at Men-an-Tol. Both Beverley and I rode all the way to Lands End on a very hot and horse fly ridden day. This is the second time Bev and I have ridden the Tinnars' Trail and once again we thoroughly enjoyed it. Perhaps we should run this as a Tinnars' Way special horse hike next summer? It will require some organising as a one way trip.

Finally, for those who have not yet rejoined us, reminders for membership renewal will go out with this Horse Around. This will be your last newsletter unless you renew. We do hope you will continue to support us. We continue to work tirelessly on your behalf for a better bridleway network. ... Margaret

## *In This Issue*

*Dressage to Music*  
*Gold Paths Initiative*  
*RideUk*  
*Adopt a Bridleway*  
*TROT*

*and more ....*



**Judy Sharrock, Margaret and Beverly at Lands End and 'Westy' takes a bow. (see inside)**

## ***Brand New WEB Site.***

**We have a brand new Web Site:**

<http://www.bhsaccesscornwall.org.uk/westpenwithbridleways>

We hope you find it useful and informative. There is a 'Latest' page so that you can see news quicker. There is also a report on every bridleway. The site will be developed further.

Please also visit the parent site BHS Access Cornwall

<http://www.bhsaccesscornwall.org.uk/>

**Our email address has also changed.**

**Email:** [wpba@btinternet.com](mailto:wpba@btinternet.com)

**Do we have your current email address?** If we do you should have received an email from us as we posted this.

**Please do let us know your current email address.** Just send us an email. Subject: subscribe

## **WEST PENWITH BRIDLEWAYS ASSOCIATION**

*Chairman:* Adrian Bigg, Treveffa Farm, Trevega, Zennor, TR26 3BL

*Treasurer:* Charlie Cartwright *Secretary:* Margaret Bigg,

**Email:** [wpba@btinternet.com](mailto:wpba@btinternet.com)

**Web:** <http://www.bhsaccesscornwall.org.uk/westpenwithbridleways>

**Tel:** 01736 795098

**Text:** 01736 795098

## DRESSAGE TO MUSIC

Those of you who know me and my horse Trennal Tristan (otherwise known as Twister) will realise that we have been around a long time and have up till now tried our hand at all sorts of Riding Club activities. About 5 years ago due to my advancing years I decided it was time to stop leaving the ground and I ceased competing altogether. Twister however continued his career eventing with a lot of success with local rider David Curnow as his jockey. 2 years ago I thought I might try some dressage. I mistakenly thought this might be an easy option for an old lady! To my surprise I found myself really enjoying my weekly lessons and competing with increasing success locally. Last year I witnessed a 'Dressage to Music' competition and thought I would like to have a go, so it has become my project for 2006.

Not an easy project! First you have to find music to fit your horse's 3 paces. I took Twister to some one who has a huge music collection and has done lots of dressage to music herself. Following a process of trial and error we finally chose 3 pieces of music which she edited for me into a CD. This CD has to last a certain length of time depending on the competition to be entered. Next comes the choreography- at each level certain movements have to be included otherwise it is freestyle. There are collective marks for inventiveness and interpretation of the music.

My first competition was at Tall Trees where Twister performed very well but our programme was a bit uninteresting. We were 2nd in a very large class. Our second music competition was quite different! We were selected to be part of the Threewaters Riding Club team to take part in the Area Dressage Qualifiers at St Leonards in June. Our team of 4 riders finished in 6<sup>th</sup> place whilst the other team was 3rd. I also entered as an individual in the Music at Novice level. 'This proved to be far more complicated than I thought. My CD music had to be changed because it was in a 40x20 arena and I had to join British Dressage because it was an Affiliated Riding Club event and all the music has to be approved by British Dressage before you can compete! The actual competition almost was a disaster too. I was waiting in the arena for my music to start following a signal to the man working the music system. When it started the music was so distorted I couldn't recognise it as mine! I stopped and asked for it to be replayed to make sure it was mine and following apologies to the judge restarted. Finally we got it all together and we both really enjoyed it. We finished a creditable 2nd failing to qualify but quite pleased with our efforts.

I never thought that I would be able to represent my Riding Club for the first time in my dotage but I didn't let the side down and there is always next year for a better more complicated routine. Who knows what the old lady will do next?

Heather Gibbons

## Autumn / Winter 2006 / 7 Programme of Horse Hikes

Please note these dates in your diary now

Organiser  
or Contact

U	Great Flat Lode	14/15 Oct	M & A
U	St Just	21/22 Oct	Amanda
U	Polgigga	28/29 Oct	M & A
UU	Lizard	11/12 Nov	Alison Lugg
UU	Nancedra	25/26 Nov	M & A
U	Tehidy Woods	2/3 Dec	M & A
UU	Gwinear	9/10 Dec	M & A
U	Xmas Cracker St Just	16/17 Dec	Amanda
UU	Poldice Valley	6/7 Jan	M & A
U	Drift Dam	13/14 Jan	M & A

Always check with the organiser or ourselves a few days before. The exact date will be determined by the interest in the ride and/or weather.

### Contacts:

Margaret and Adrian tel: 01736 795098

Amanda tel: 01736 871876;

Alison Lugg 01326 241545

**Hikes are ridden at your own risk. BHS Affiliation covers our members for Public Liability Insurance on organised rides.**

### Juniors on Horse Hikes

All juniors must be accompanied by a responsible parent or guardian who can look after them and their safety on the ride, and can vouch for their riding competence.

If you have a good idea for a Horse Hike or wish to organise one, do please let us know!

U Easy Ride    UU Average Ride

\*\*\* Christmas Drink \*\*\*

Our Informal Xmas Drink will be  
on Tuesday 19 December 7:30  
at  
The Engine Inn, Cripplesease, Nancedra

## "Jog to Lands End"

Horse Hikes have been scarce over the summer so it was great to have a chance to escort Judy Sharrock on her last leg of her epic trip from John O' Groats to Lands End. Dawn and Beverly helped us.

Judy from Hampshire reached Lands End after a mammoth 1400 mile ride on horseback on 16<sup>th</sup> July. Judith spent a year in planning this epic trip to raise funds for Great Ormond Street Children's Hospital and The Fortune Centre of Riding Therapy. Judy often averaged between 25 and 30 miles a day on her trip and regularly started at 6am to avoid the heat and the flies. The journey took nearly 10 weeks.

If you want to know more about Judy's long distance ride, such as when she and 'Westy' fell thru a rotten bridge and got stuck miles from anywhere in Scotland and narrowly escaped serious injury, then visit her website [www.jogtolandsend.org](http://www.jogtolandsend.org) to read her adventures and to donate to her good cause.



Judy Sharrock and 'Westy' at Lands End

## County Council Gold Paths Initiative

The planned three year programme of work on our paths and bridleways has started under the Public Paths Improvement Programme (PPIP). The 3 year programme to renovate our bridleways and footpaths is already running behind schedule. We are not surprised as we calculated the County Council needed to 'fix' one bridleway a day to meet their target. Only about half of all paths have been allocated Gold Status but owing to our campaigning, most bridleways have been allocated the necessary Gold.

We are carefully watching the work done as we want particular attention paid to Gates ensuring they can be easily and safely opened. Unfortunately we cannot insist that they are openable from horse back.

They are planning to cut back vegetation really hard and ensure a reasonable surface and that it is drained where needed.

### Marazion:

The first parishes to be addressed were Marazion and Penzance. Puzzling though it may be no work was scheduled on the only bridleway in Marazion running from Green Lane, despite it having numerous gates which did not easily open and one kept shut with a large boulder. We are still pressing for the faults to be rectified.

### Ludgvan:

Work is now starting on the paths in Ludgvan. Ludgvan has the longest bridleway in Penwith – Carters Grave Lane, Nancledra to Canonstown. Its condition is very poor with very bad bogs that become impassable in winter. Work should have started at the beginning of September but problems delayed this. We are going to be shown the work as it starts to ensure that the surface is made good. We are worried that the winter rains will halt work prematurely, if it isn't started soon.

### Madron Kennel Lane:

We did report on the serious problems and accident on Kennel Lane, Madron in the last Horse Around. Work is about to start on that bridleway. The rest of the paths in Madron are still not scheduled for improvement until 2008.

### Paul:

The paths of Paul are shortly to be looked at. Despite the great works reported in the last Horse Around more work is planned on the bridleway by Lamorna Pottery (Paul 13). There are still a few really nasty boggy stretches that need attending to. It will be a lovely bridleway through the woods when properly finished.

***We are liaising with the County Council on the work as it is planned and progresses. It is a very large undertaking with great expectations. We are hopeful that better progress will be made as the programme of works proceeds.***

We also are trying to get some very bad problems addressed at an early date, through joint efforts of the County Council and our PAROW paths officer (Jolly Green Giant) Chris.

See "[Bridleway Problems](#)".

## Revised Schedule

July-Sep 2006	Marazion, The St Michael's Way, Penzance
Oct-Dec 2006	Paul, Perranuthnoe
Jan-Mar 2007	St Buryan, St Levan, Ludgvan
Apr-Jun 2007	Sennen, St Just in Penwith
July-Sep 2007	Morvah, Zennor
Oct-Dec 2007	Towednack, St Ives
Jan-Mar 2008	Hayle, Gwinear-Gwithian
Apr-Jun 2008	St Erth, St Hilary
July-Sept 2008	Madron, Sancreed

## Ride- UK

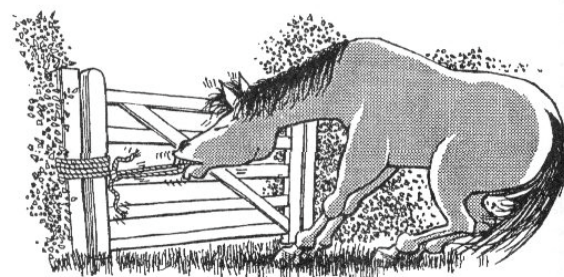
If you remember, we are working on behalf of the BHS with the County Council and obtained a grant of £25,000 to plan and cost the project for its submission to potential funders.

We have now completed extensive work on the project with the production of professional documents detailing a potential route and including pictures. We are now awaiting the County Council to accurately cost the project and develop the plans further and have passed it over to the CC.

The work we have done is the BHS contribution to the project valued at 500 man hours. The work also demonstrates an effective way to improve our riding network by providing linked riding routes with good local rides.

We hope that RideUK will play an important part of the Council's 'Cornwall County Access Strategy' (CCAS).

## Bridleway Gates



You will remember in the last Horse Around we showed a proper bridleway gate with a new "Easy Latch".

Unfortunately the County Council is saying it cannot afford these for all gates, and that it is not necessary to bring bridleway gates to this standard.

We are very concerned that if a gate is remotely serviceable nothing will be done as on the Lizard.

Margaret is pictured below struggling to reach the catch on a newly "renovated bridleway". What chance whilst holding on to a horse.



***Margaret standing on a large stone attempting to reach the gate catch***

## ***Keeping Our Paths Clear***

The County Council pays our parish councils to trim our paths. The budget is limited and is calculated according to the total length of paths in a parish. The parishes in turn hire contractors to do the work.

It is acknowledged that the scheme often does not seem to be working very well. The standard of work done varies considerably from parish to parish. Much does depend on how well the work is planned and managed.

This year the paths in some parishes do not seem to have been trimmed well back if at all. There are of course many exceptions.

One problem especially with bridleways is keeping the side vegetation trimmed. The path gets progressively narrower and narrower until it becomes footpath width. We often find that where paths are cut they are just lightly strimmed without any attention being paid to overhanging branches, blackthorn bushes etc.

The County Council is going to cut back the bridleways really hard when it overhauls them as part of the paths improvement scheme. It is important that once this work is done that the bridleways (and footpaths) are kept well cut back. The working of the parish maintenance scheme is going to be changed to try and improve its effectiveness in light of the Gold Paths improvements.

## ***PAROW (Penwith Access and Rights of Way Forum)***

Our PAROW Paths Officer, (Jolly Green Giant) is still doing sterling work in clearing paths. One problem is getting the parishes to keep the paths clear once cleared. There is a limit to how many paths one person can keep clear.

Adrian has now taken over as Chairman of PAROW and is working with Chris, and the County Council in trying to find more efficient ways of keeping paths clear using better machinery. We have two Brush Cutter mowers to cut a paths surface but ideally we would like a compact tractor with a flail for keeping the bridleway hedges trimmed back properly. Our Penwith District Council Rural Development Office (Rob) is working hard on getting grants for more equipment and for the future work of PAROW

## ***Adopt a Bridleway***

One problem we do have, is getting information on the condition of our bridleways and paths. **This is where you can help.**

Is there a bridleway that you regularly ride (cycle or walk)? We would like to find at least one of our members for every bridleway in Penwith.

All we would ask is that you tell us if the path is overgrown, and conversely we would like you to tell us when the path is cut back and how well the job has been done.

Please do phone or email us and let us know if you can help. It's in your interest to enable us to help in ensuring that your paths are not forgotten.

Using this information we are going to keep a full record of the current condition of our bridleways – good or bad. This information will be very helpful to ourselves, the parish councils and the County Council.

## ***Bridleway OnLine Reports***

Please do look at our brand new WPBA Web site.

<http://www.bhsaccesscornwall.org.uk/westpenwithbridleways>

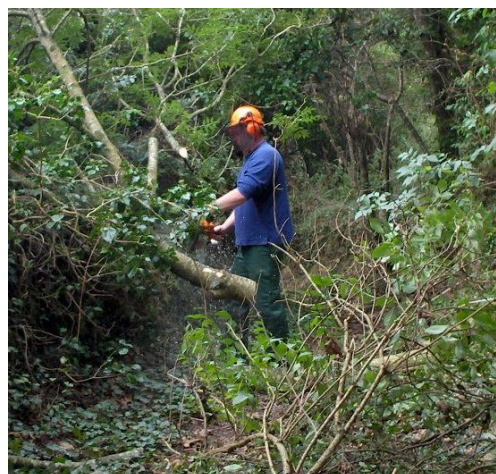
***On this site are details of every bridleway in Penwith – together with a report of the last reported condition.***

***This is why our 'Adopt a Bridleway' scheme is so important. We do need the information – anything you report to us will be quickly put onto this Web Site.***

***Further this data is also on our new BHSACCESS CORNWALL web site together with details for every bridleway in the County!***

<http://www.bhsaccesscornwall.org.uk/>

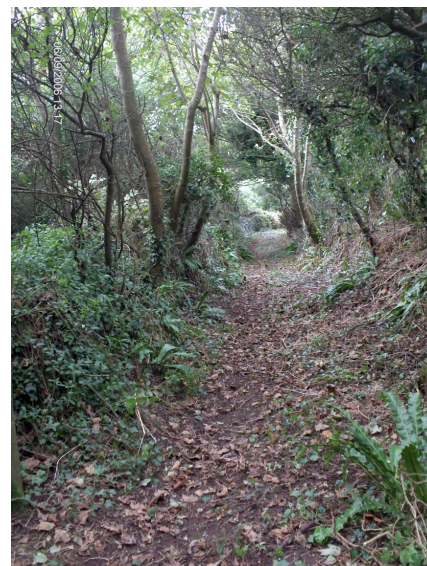
Reports on any bridleway in the County are wanted!  
***Please give us reports either by Phone or Email, or snail mail.***



***Jolly Green Giant busy with Chainsaw on Tresidder Bridleway***

## ***Bridleway 18 St Levan***

This bridleway runs from Bottoms to Tresidder and has been partially blocked by several large trees overhanging the path. Chris and ourselves spent an afternoon clearing this old lane. We have also sought the help of the County Council in getting local residents not to obstruct the path with rubbish and cars. Please let us know if problems reoccur.



***Result: a lovely clear bridleway***

## **Bridleway Dedications**

### **Wild Life Trust - Bakers Pit Nancledra**

You may remember that the Cornwall Wildlife Trust refuse to give a permissive access along a track across their reserve to reach the Castle-an-Dinas Bridleway, which goes on to Castle Gate or down to Chysauster. The good news is that they have now been doing extensive works in preparation for conservation grazing and in the course of that have remade the old walked path and have agreed at least permissive ridden access and have tentatively offered to dedicate it as a bridleway. They are putting in new bridleway gates in liaison with the county Council. At least we can now have a really nice ride right down to Chysauster. We also believe that the bog by the fir trees has been fixed by the County Council after our reports

### **Steeple Woods**

Further to the article in the last Horse Around on Steeple Woods St Ives, the project group have agreed that they would like to see the old path that used to be ridden made into an official bridleway. Penwith District Council own the Path but we are taking months to try and find who in Penwith District Council can make the dedication.

St Ives currently only has one bridleway!

### **English Nature Permissive Paths**

Although not our patch, a new 'cut thru' has been created to join up 3 bridleways near Lizard village. This has been done after our discussions with English Nature. We are delighted as it will now enable our Lizard horse hike to return by a circular route instead of riding back the way we came.

English Nature have created many permissive bridleways on the Lizard Peninsula, on Goonhilly and Predannack Downs. Some more are planned.

They are also creating new bridleway trails with the County Council on Goss Moor

### **Slippery Roads**

We have had useful meetings with Cornwall County Council Highways on slippery roads, and the dreaded SMA surface. SMA does become non-slippery after it has been in use, but that does not help you and your horse when you have to ride a newly laid surface.

We are liaising with the Divisional surveyor for Penwith (whose wife also rides) to see how these problems can be dealt with. He is experimenting with top dressing SMA in critical locations. One site is the road down to Cape Cornwall.

Our country lanes become very slippery without SMA being put down. Unfortunately the standard skid tests used do not use horse's hooves. We complain and we are told the surface meets the appropriate standard – not a lot of help if your horse is on its belly, with its legs splayed out!

Its a matter of limited budgets. One particular bad stretch of road brought to our attention is the road through Grumbra to Sancreed. The CC have acknowledged this needs attention. Some remedial work is planned and it should be resurfaced next year.

We will keep you posted how these issues progress.

## **STEEL HORSE NEWS**

We've had some cracking bike rides with Ground Force, generally doing between 15 and 20 miles on our steel horses. The winter rides were quite dry, but once the rains came in May we really hit the mud big time.

Adrian had the misfortune to 'fly over the handlebars' whilst we were crossing the A39 at Deveron and dumping himself on the busy road in front of standing traffic. A bridleway/cycle way tunnel is being constructed to avoid this nasty crossing point. This will complete a true safe Coast to Coast Trail Deveron to Portreath through the Police Valley.- a good cycle and Horse Hike, once construction is completed Autumn 2007.

### **BHS urges riders to support cyclist who refused to stay in gutter.**

A cyclist was cycling fast downhill on a single-lane approach to a roundabout. He was stopped by police who believed his position in the centre of the lane was forcing cars to cross the solid white line in the middle of the road illegally to overtake him. Rather than stop the cars that had broken the law, the officers decided to charge him. He was fined £100 with £200 costs!

He was following National Standard for cycle training, Will horse riders be similarly fined for ensuring their own safety? We will watch developments.

### **What is a Multi-User Trail?**

I have been told at a high level by the County Council that a multi-user trail is open to as many user types as possible, level and with a good surface?

The County Council is strongly in favour of such trails. Is it going to level out the hills of Penwith?

We consider a good bridleway to be a multi-user trail by definition.

Shared User tracks – trying to solve a problem that hasn't happened?

The University of Surrey have done research on shared user facilities. They concluded it is more the perception that users will conflict, when the reality is there is none. Apparently there are no facts that bear out that there are more accidents.

Sustrans believe tarmac is the preferred maintenance-free option for cycle trails. BUT who wants to cycle, ride or walk boring unforgiving tarmac!

---

Since the London congestion charge came in a couple of years ago, the number of cyclists has increased in the capital by 50%!

## More Bridleway News In Brief.

- St Levan 52, Trendennen to the coast above Porthcurno, has been trimmed out by Our Jolly Green giant Chris, and also St Levan Parish – it does grow in very quickly.
- Towednack 1 has been cleared of stones and boulders so that it can be easily maintained by the PAROW Flail Mower. see pictures.
- Paul 27 has been trimmed by Paul Parish at our request – but it is still not ridable by horse. The contractor has only strimmed the ground! This is a typical problem – everything is treated as a footpath. It is a constant battle – BUT we will win.

Our Jolly Green Giant, Chris, is now working with Paul parish to get a better structured plan for keeping their paths clear. Further the County Council is about to renovate all the 'Gold' Bridleways in Paul so they should be cutting that bridleway well back soon.

- The ridden footpath from the St Just Old Road over to Bosvenning and Roskennals Common has been cleared by Chris using the PAROW big Strimmer. Some more work is required at the Cornwall Wildlife Trust end.
- Chris has also cleared the bridleway by Bartinney Farm and the new path leading up on to Bartinney.
- He has also cleared the ridden footpath (hoofpath) around Rosewall Hill after St Ives failed to do it despite it being reopened by the County Council only last year.

Many Parishes have also been busy clearing their paths, and a big thanks to the parishes who have kept bridleways clear and easy to ride.

- **The prize for the worst parish** (unless you know better) unavoidably goes to St Erth. They appear to have done nothing at all, and have not answered any communications regarding the footpaths and bridleways of the parish. They get the RDA award (Rarely Do Anything!)

A particular problem is the Bridleway that runs from near the Hayle river past Trannack Mill and on through Trannack Farm. It is currently impassable. Alistair Beasley one of our members in St Erth is going to help Chris clear this bridleway and remove all the very low overhanging branch. The County Council are kindly supplying us with a brand new gate. We thank Alistair for his help and reporting other problems in St Erth.

- We also have discovered that the only official bridleway in St Ives has low overhanging trees and on which a local rider had a nasty accident a short while ago. She got caught up in the trees and dragged off her horse. Why Oh Why don't riders complain to the Town Council and/or the County Council. If no one knows of the problem nothing will be done. We are now hopeful that the County Council will be able to clear this bridleway in advance of the planned renovation work next year.
- One bridleway we are anxious to open up as a through route is bridleway 4 near Gulval that magically stops at the parish boundary. In Madron parish the old track is not designated as bridleway – typical. Hence the County Council will take no responsibility. We hope we can get the old track reopened with by liaising with the landowner. However we have not yet been able to schedule this work.
- Some more work that is scheduled is renovation at Caer Bran of the Rings ancient site, Sancreed. This hopefully will provide a cleared path through from Burnt House Lane. PAROW (Chris) will be doing that in liaison with English Heritage.



**Chris and Adrian (tractor) clearing boulders from Towednack 1.**



**The finished result – Best Bridleway for miles around and worth riding. – But a dead end. – although it should not be – there is a through road marked on the old maps through Trevail Mill**

## Men-an-Tol blockage

Hurray, this is now clear! At our request, Toby Lowe our local Countryside Officer, agreed with the farmer to give the offending boulder a shove to allow horses through. The final plan is to fit a nice wrought iron, self-closing horse gate with horse latch. Although this lane (the Old St. Ives road) is only designated as a footpath, the County Council recognises that it is an essential horse path connecting to moorlands and closure of such would sever the vital link.



**Going past the moved boulder**

Apparently, the problem lay with a few irresponsible speeding motor bike trail riders.

Sadly abuse by any user causes problems for others.

One consequence of this is that walkers are now requesting stiles on some of the paths we ride to stop motor bikes. Although we have great sympathy for motor bikers, who, like us, have limited riding available, but if it results in us losing more riding routes, our support for them is going to be limited.

## **TROT Toll Rides**

The Toll Rides Off-Road Trust is known as TROT. It is a non-commercial registered charity, organised by riders, with local agents in many parts of the UK. All funds raised go towards paying the farmers/landowners, establishing the routes. Riders pay a licence toll to the scheme. The cost depends upon how many miles are open to riders. They receive a coloured, numbered hat band which must be worn as proof of membership and insurance.

There is now a new Toll Ride Initiative near Goldsithney. Jill Thomas at Eclipse Equestrian has negotiated for a new ride of about 12 miles mainly on St Aubyn estates land, north of Goldsithney. The ride opens up new paths that have not been currently available. A very important point about the establishment of Toll rides is that they should not use any paths that have always been used freely and on which there may be unrecorded rights for horse riders. The ride does use some sections of definitive bridleway but these are not part of the Toll ride sections.

We are very interested to see how well this scheme works. We feel it can be a viable option to open up good riding depending upon land layout, ownership and importantly local demand. We do not think it is a viable solution for meeting our general riding needs.

The TROT scheme is a national initiative and once joined it is transferable to other sites. Jill is the local Agent for Trot in the Goldsithney Area. Anyone interested in the scheme and trying out the ride (day passes available) please contact Jill at Eclipse 01736 719170 for more details.

## **Natural England**

Natural England came into being on 1 October. This new organisation will bring together English Nature and the recreation elements of the Countryside Agency (CA) and the environmental land management functions of the Rural Development Service (RDS).

Natural England will work for people, places and nature, to enhance biodiversity, landscapes and wildlife in rural, urban, coastal and the marine areas; promoting access, recreation and public wellbeing, and contributing to the way natural resources are managed so that they can be enjoyed by future generations.

We believe that the promotion of access and recreation will figure highly on their agenda. The responsibility for Natural England comes under the government ministry DEFRA. (Department for Environment Food and Rural Affairs).

## **HORSE BURIALS**

It has been suggested in horse and rural magazines that burying your horse on your own property is now illegal. This however is a fallacy. Our local planning department and Defra have said there are no set rules against equine burials, but they refer enquiries to the local Trading Standards Office.

Trading Standards state that as long as you have declared on the last page of your horse passport that your horse will not be entering the food chain and your horse is not classified as stock or being run as a business (stud, dealer's yard etc ) you are within your rights to have your horse buried on your property. The Animal By Products Regulations 2003 bans the burial and open burning of fallen stock and animal by-products. However, the burial of pet animals and wild animals will continue to be permitted. A pet, as defined within the regulations is: 'any animal belonging to species normally nourished and kept, but not consumed, by humans for purposes other than farming. (letter taken from a magazine article)

## **Cornwall Achieves World Heritage Status for its Mining Landscape**

This is good news for Penwith as St. Just (Area 1) and the Tregonning and Gwinear Mining districts (Area 3) are 2 of the 10 identified areas making up the distinctive mining landscape. Apart from the conservation and protection of these industrial and cultural sites, the importance of access to such places is recognised, and forms part of the mining heritage policy "access must be equally available to all". Visitors and tourism is a major driver in regeneration strategies.

We will keep a close eye on any opportunities for improving and developing horse access. The Tinnars' Trail section of the Ride UK project would fit well as it links St. Just to St. Ives.



Future expansion of the Mineral Tramways multi-user trails network will facilitate greater public access to mining landscapes.

Those of you who have been on the Poldice Valley or Great Flat Lode horse hikes will know what can be achieved in opening up new riding opportunities in old mining landscapes.

## **Other News**

### **Officers find a small pony in a Mini!**

Police in Norfolk who stopped a mini metro believed to have been involved in a road accident, found a Shetland pony on the back seat! The incident was among details of traffic offences listed to help educate drivers, as part of an accident reduction campaign

### **Did You Know?**

Hippopotamus means "River Horse"

### **And Finally:**

*Contributions for the next Horse Around will be very welcome. We would like to hear from you. Also we would like to hear your suggestions of what you would like to see on our web site as it evolves.*